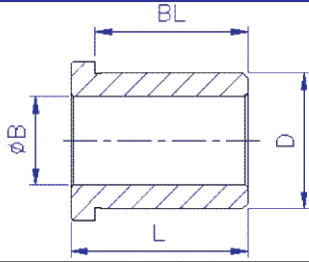


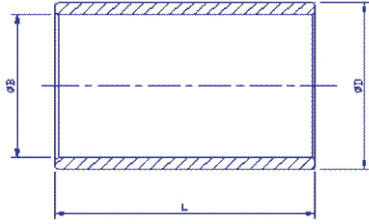


TOP HATS for fitment of wheels equipped with Precision Ball Bearings



Part No.	Axle Dia (inch)	Wheel Hub Length (inch)	Ball Bearing Bore D (inch)	Axle Bore B (inch)	Bearing Length BL (inch)	Total Length L (inch)	Suitable For Castor Series
TH-1220-20-32	1/2	1-5/8	0.787" (20 mm)	1/2	0.8070	1.279	GHR GHKU
TH-1220-28-32	1/2	2-3/16	0.787" (20 mm)	1/2	1.102	1.279	GHK-DBR GHK-BB GGSU U20
TH-1930-35-45	3/4	2-3/4	1.181" (30 mm)	3/4	1.375	1.77	GRDU U25
TH-1930-41-45	3/4	3-1/4	1.181" (30 mm)	3/4	1.624	1.77	U30 GAD
TH-2532-35-45	1	2-3/4	1.250"	1	1.375	1.77	GTB (3")
TH-2532-41-45	1	3-1/4	1.250"	1	1.624	1.77	U100
TH-2532-54-57	1	4-1/4	1.250"	1	2.125	2.25	GTB (4")
TH-3240-35-45	1-1/4	3-1/4	1.575" (40 mm)	1-1/4	1.624	1.77	U150, U150D (3")
TH-3240-54-57	1-1/4	4-1/4	1.575" (40 mm)	1-1/4	2.125	2.25	U150, U150D (4")

SPANNER BUSHING



Part No.	Dia D (inch)	Bore B (inch)	Length L (inch)	Fits In Castor Series
SB-1912-48	3/4	1/2	1.875	GHR
SB-1912-62	3/4	1/2	2.438	GHKU
SB-1912-76	3/4	1/2	3	GHK-DBR
				GHK BB
				GGSU
				U20
SB-1916-62	3/4	0.625	2.438	AB
SB-2519-76	1"	3/4	3	GRDU, GAD
				U25
SB-2519-89	1"	3/4	3.50	U30
SB-3225-89	1.25	1	3.5	GTB
				U100
SB-3225-114	1.25	1	4.563	GTB
SB-3832-89	1.50	1.25	3.5	U150, U150D
SB-3832-114	1.50	1.25	4.583	



AXLE KITS



Part No.	Axle Dia (inch)	Length (inch)	Nut Type	Nut Size	Fits Castor Series
AXL-1295-NY-UNF	1/2	3-3/4	NYLOC	1/2" UNF	GHR GHKU GHK-DBR GHK-BB GGSU U20
AXL-1295-SS-NY-UNF	1/2	3-3/4	NYLOC	1/2" UNF	GHKU-SS
AXL-19133-SN-UNF	3/4	5-1/4	SLOTTED NUT	3/4" UNF	GRDU GAD U25 U30
AXL-25165-SN-UNF	1	6-1/2	SLOTTED NUT	1" UNF	GTB U100
AXL-32170-SN-UNF	1-1/4	6-3/4	SLOTTED NUT	1-1/4" UNF	U150
AXL-32248-SN-UNF	1-1/4	9-3/4	SLOTTED NUT	1-1/4" UNF	U150D

★ Axles supplied with slotted nuts are furnished with cotter pins.